

글로브 밸브**for JIS 10K ~ JIS 20K****글로브 밸브 특징****일반적으로**

글로브 밸브는 현대의 공장에서 사용되는 "최종 제어 요소"에 대한 비용 효율적인 해결책을 제공하기 위해 개발되었습니다. 밸브 디자인은 다음을 결합합니다. 대용량, 경제적 설계 철학 및 탁월한 성능을 갖춘 직렬 컨트롤 글로브 밸브의 성공적인 높은 무결성 기능

성능:

- 높은 CV 대 차체 크기 비율
- 용량 최적화를 위한 유로 간소화
- 밸브 중량 대비 높은 CV 비율
- 우수한 유량제어범위성

**참고1.****공업 구동식 글로브 밸브**

글로브 밸브 사양

Valve Type	Pneumatic Globe Control Valve														
Valve Model															
Body Type	Conventional, Small body														
Trim Type	Balanced, Unbalanced, Anti-cavitation, Low-noise, Optional special Trim														
Valve Size	(Inch)	1/2	3/4	1	1.1/2	2	2.1/2	3	4						
	(mm)	15	20	25	40	50	65	80	100						
Pressure Rating	JIS 10K ~ JIS 20K														
End Connection	RF														
Body Materials	SCPH2, SCS13, SCS14														
Bonnet Type	Plain(-17°C to 230°C)														
Packing	Teflon fiber														
Gasket	Spiral wound metal gasket														
Guiding	Top / Cage														
Seat Type	Metal														
Valve Plug Shapes	Contoured / Cage														
Plug Characteristic	Equal Percentage														
Trim Materials	Stainless steel														

설계 무결성 :

- 시트를 방해하고 이물질이 낄 수 있는 하부 가이드가 없는 무거운 Duty TOP Guide.
- 지름이 큰 스템
- 고정식 바디와 시트 링, 가스켓은 유지보수가 용이.

품질 제조 :

- 현장에서 지정된 성능을 보장하기 위해 엄격한 테스트가 이루어집니다.
- ISO 9001에 따른 품질 보증 시스템.
- 추가적인 NACE MR-01-75 전체 인증

설계 범위:

End Connection Sizes: 1/2" to 4" (15mm to 100mm)

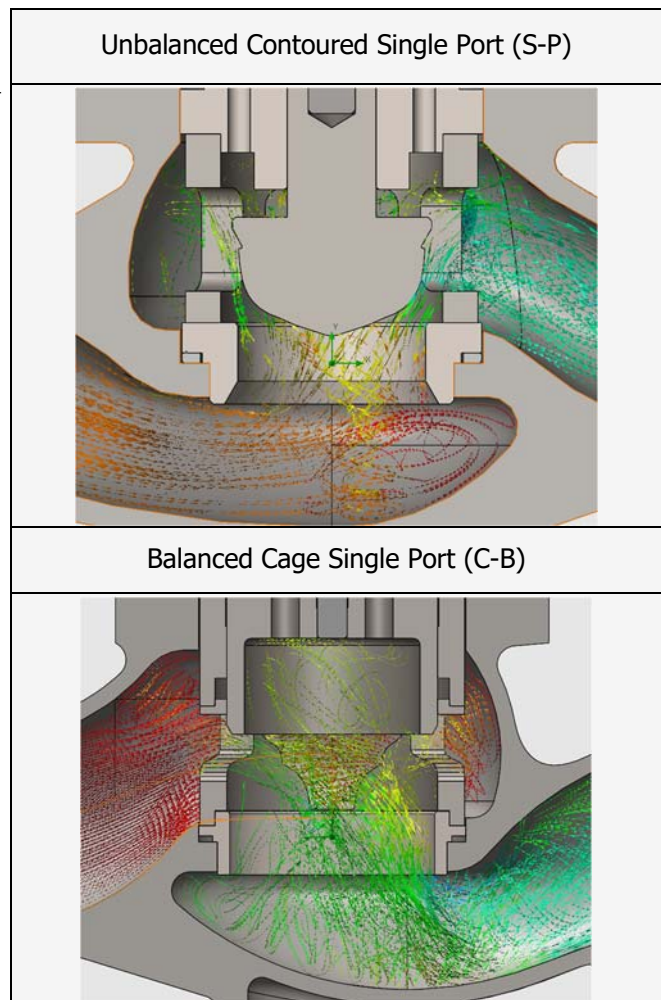


Figure 2. Trim Type

Body Materials (Standard)

Material	Body material		Service temperature range (deg C)			Main component
	JIS	ASTM	JIS(B8243)	High Pressure gas	ANSI (B1634)	
Cast steel	SCPH2	A216-WCB	0~450	-29~425		
Cast stainless steel	SCS13	A351-CF8	-196~800	-196 and over	-29~800	18Cr-9Ni
	SCS14	A351-CF8M	-196~800	-196 and over	-29~800	18Cr-12Ni 2.5Mo

Standard combination of materials available

Fluid	Condition	Body	Port	Seat	Stem
NORMAL FLUID	It depends on the fluid type and temperature & pressure.	SCPH2	304SS	304SS	304SS
		SCS13	316SS	316SS	316SS
		SCS14	316SS	316SS	316SS
STEAM (LP, LT)	LP(<20KG) & LT	SCPH2	410SS	410SS	410SS
	MP & MT	SCPH2	420J2	420J2	420J2
	HP & HT(>425?)	SCS13	440C	440C	440C

Note:

1. Please check with your Doctor Valve account manager, if needed.
2. Materials may vary depending on service condition (pressure, temperature or fluid).

Design Cv Tables

Table 2. Contoured Cv values
(Unbalanced)

TRIM SIZE (inch)	Stroke (mm)	EQ%	Linear
1/8"	15	0.4	0.4
3/16"	15	0.8	0.8
1/4"	15	1.5	1.5
3/8"	15	3	3
1/2"	15	5.2	5.2
3/4"	15	9	9
1"	15	14	14
1.1/4"	20	24	24
1.1/2"	20	32	32
2"	25	52	52
2.1/2"	25	78	78
3"	38	116	116
4"	38	195	195

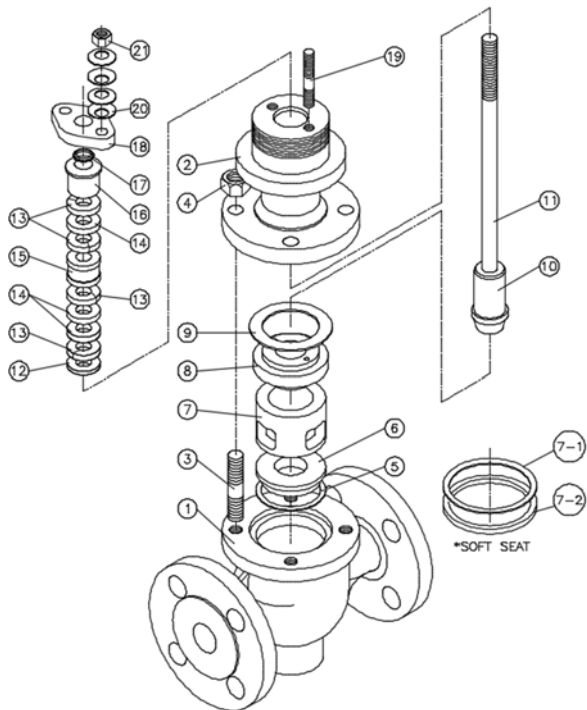
Table 3. Contoured Cv values
(Unbalanced) Small Flow

Table 4. Cage Cv values
(Balanced)

TRIM SIZE (inch)	Stroke	EQ%	Linear
3/4"	15	7.3	7.3
1"	20	12.7	12.7
1.1/2"	20	27	27
2"	30	48	48
2.1/2"	38	75	75
3"	38	125	135
4"	50	210	211

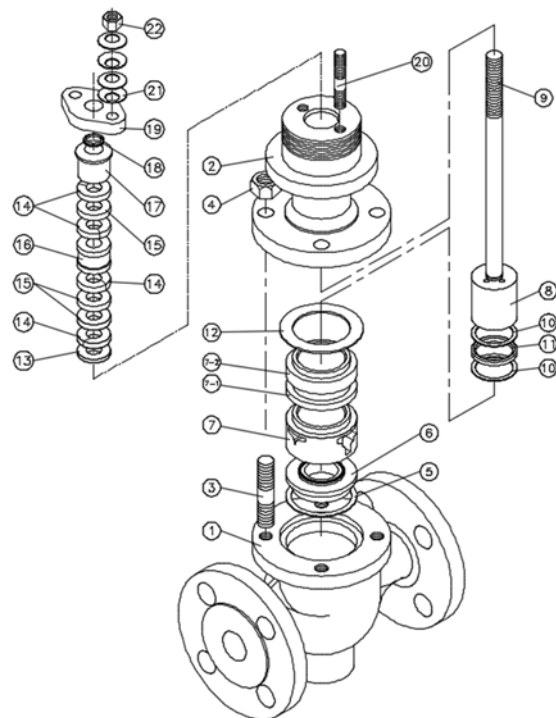
Note : The above Design Cv values apply to valves with body rating ANSI 150 to ANSI 600.

Parts List



21	HEX. NUT	STAINLESS STEEL	2
20	CONED DISC SPRING	SK5M	8
19	GLAND BOLT	STAINLESS STEEL	2
18	GLAND FLANGE	STAINLESS STEEL	1
17	DUST RING	TEFLON	1
16	GLAND FOLLOWER	STAINLESS STEEL	1
15	LANTURN RING	STAINLESS STEEL	1
14	GLAND PACKING	GRAPHITE	3
13	GLAND PACKING	CARBON FIBER	4
12	PACKING RING	STAINLESS STEEL	1
11	STEM	316L SS, ALLOY STEEL	1
10	INNER VALVE	STAINLESS STEEL, ALLOY STEEL	1
9	BONNET GASKET	SUS+GRAPHITE, SUS+TEFLON	1
8	GUIDE	STAINLESS STEEL, ALLOY STEEL	1
7-2	TEFLON SEAT	TEFLON	1
7-1	SEAT RETAINER (2)	STAINLESS STEEL, ALLOY STEEL	1
7	SEAT RETAINER (1)	STAINLESS STEEL, ALLOY STEEL	1
6	SEAT RING	STAINLESS STEEL, ALLOY STEEL	1
5	SEAT GASKET	SUS+GRAPHITE, SUS+TEFLON	1
4	HEX. NUT	2H, 8, B8M	4
3	STUD BOLT	B7, B8, B8M	4
2	PLAIN BONNET	WCB, CF8, CF8M	1
1	BODY	WCB, CF8, CF8M	1
NO.	NAME OF PARTS	MATERIALS	Q'TY

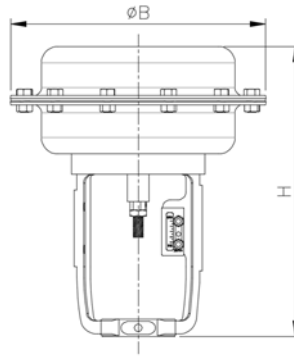
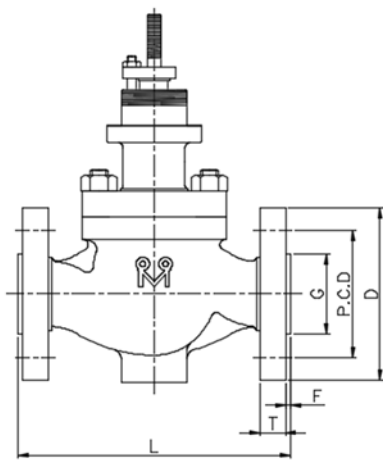
Figure 7. Body Disassembly and Assembly Diagram (S-P type)



22	HEX. NUT	STAINLESS STEEL	2
21	CONED DISC SPRING	SK5M	8
20	GLAND BOLT	STAINLESS STEEL	2
19	GLAND FLANGE	STAINLESS STEEL	1
18	DUST RING	TEFLON	1
17	GLAND FOLLOWER	STAINLESS STEEL	1
16	LANTURN RING	STAINLESS STEEL	1
15	GLAND PACKING	GRAPHITE	3
14	GLAND PACKING	CARBON FIBER	4
13	PACKING RING	STAINLESS STEEL	1
12	BONNET GASKET	SUS+GRAPHITE, SUS+TEFLON	1
11	O-RING	NBR	1
10	BACK-UP RING	TEFLON	2
9	STEM	316L SS, ALLOY STEEL	1
8	INNER VALVE	STAINLESS STEEL, ALLOY STEEL	1
7-2	CAGE CYLINDER	STAINLESS STEEL, ALLOY STEEL	
7-1	BALANCE SEAL	CTFE+316 SS	
7	CAGE BALANCE	STAINLESS STEEL, ALLOY STEEL	1
6	SEAT RING	STAINLESS STEEL, ALLOY STEEL	1
5	SEAT GASKET	SUS+GRAPHITE, SUS+TEFLON	1
4	HEX. NUT	2H, 8, B8M	4
3	STUD BOLT	B7, B8, B8M	4
2	PLAIN BONNET	WCB, CF8, CF8M	1
1	BODY	WCB, CF8, CF8M	1
NO.	NAME OF PARTS	MATERIALS	Q'TY

Figure 8. Body Disassembly and Assembly Diagram (C-B type)

Dimension List



Actuator Size	B	H
T1	257	214
T2	298	214
T3S	348	281
T3	348	300
T4	414	347
T5	526	391

JIS 10K

Valve Size	L*	T	F	I.D	G	P.C.D	D	Diameter of Bolt Holes, in.	Number of Bolts	Diameter of Bolts, in
3/4	184	11.2	2	19.1	42.9	69.9	100	5/8	4	1/2
1	184	12.7	2	25.4	50.8	79.4	110	5/8	4	1/2
1 1/2	222	15.9	2	38.1	73	98.4	125	5/8	4	1/2
2	254	17.5	2	50.8	92.1	120.7	150	3/4	4	5/8
2 1/2	276	20.7	2	63.5	104.8	139.7	180	3/4	4	5/8
3	298	22.3	2	76.2	127	152.4	190	3/4	4	5/8
4	352	22.3	2	101.6	157.2	190.5	230	3/4	8	5/8

JIS 20K

Valve Size	L*	T	F	I.D	G	P.C.D	D	Diameter of Bolt Holes, in.	Number of Bolts	Diameter of Bolts, in
3/4	194	14.3	2	19.1	42.9	82.6	115	3/4	4	5/8
1	197	15.9	2	25.4	50.8	88.9	125	3/4	4	5/8
1 1/2	235	19.1	2	38.1	73	114.3	155	7/8	4	3/4
2	267	20.7	2	50.8	92.1	127	165	3/4	8	5/8
2 1/2	292	23.9	2	63.5	104.8	149.2	190	7/8	8	3/4
3	318	27	2	76.2	127.0	168.3	210	7/8	8	3/4
4	368	30.2	2	101.6	157.2	200	255	7/8	8	3/4
5	425	33.4	2	127	185.7	235	280	7/8	8	3/4
6	473	35	2	152.4	215.9	269.9	320	7/8	12	3/4
8	568	39.7	2	203.2	269.9	330.2	380	1	12	7/8
10	708	46.1	2	254	323.8	387.4	445	1 1/8	16	1
12	775	49.3	2	304.8	381	450.8	520	1 1/4	16	1 1/8
14	927	52.4	2	336.6	412.8	514.4	585	1 1/4	20	1 1/8
16	1057	55.6	2	387.4	469.9	571.5	650	1 3/8	20	1 1/4
18	1184	58.8	2	431.8	533.4	628.6	710	1 3/8	24	1 1/4
20	1372	62	2	482.6	584.2	685.8	775	1 3/8	24	1 1/4
22	-	-	2	533.4	-	-	-	-	-	-
24	1524	68.3	2	584.2	692.2	812.8	915	1 5/8	24	1 1/2

* Face to Face dimension is based on RF flange.

* Face to Face dimension is based on RF flange.

Warranty / Remedy

Doctor Valve Inc. warrants goods of its manufacture as being free of defective materials and faulty workmanship for 12 months from the date of shipment, unless otherwise specified. In this period, all of our products claimed by original defects may be returned to our factory after notice and authorization by us. If warranted goods are returned to Doctor Valve Inc. during the period of coverage, it will be repaired or replaced without charge for those items it finds defective. Such defects shall be exclusive of the effects of corrosion, erosion, normal wear or improper handling and storage. In case our engineers have field service, the user shall detach and install valves by his cost. Determination of the suitability of the Products for the use contemplated by the buyer or buyer's customer(s) is the sole responsibility of the buyer in connection therewith. The foregoing is buyer's sole remedy and is in lieu of all other warranties, expressed or implied, including those of merchantability and fitness for a particular purpose.

Specifications are subject to change without notices.

D.V 닥터밸브
VALVES & CONTROLS

For More Information

Visit our website www.doctorvalve82.cafe24.com

DOCTOR VALVE INC.