

EPDM 버터플라이 밸브 특징

일반적으로

버터플라이는 카트리리지형 시트, 유선형 디스크, 강력한 스템 디스트 연결 기능을 갖추고 있어 식품 및 음료, 펄프 및 제지, 화학, 광업, 수처리, 발전소 등과 같은 다양한 산업 응용 분야에서 쉽게 사용할 수 있습니다.

디자인 특징

- ISO5211 상단 플랜지에 액추에이터의 직접 장착에 적합한 사각형 스템
- 스템의 파열 방지 설계로 현장 사용 시 안전 유지
- 스템과 디스크 연결을 위해 노출된 핀이나 볼트가 없음
- 플랜지 가스켓이 필요 없음
- 포지션이 닫혀있을 때 설치하는 동안 밸브가 손상될 위험이 없음
- 최대 압력 등급에서 기밀 차단
- 유선형 디스크 설계로 유량이 크고 강도가 충분함



자료 1. EPDM 버터플라이 밸브



자료 2. EPDM 버터플라이 액추에이터 결합

EPDM 버터플라이 밸브 사양

Valve Type	EPDM 버터플라이 밸브									
Body Type	EPDM									
Valve Size (Inch)	2	2-1/2	3	4	5	6	8	10	12	
(mm)	50	65	80	100	125	150	200	125	150	
Pressure Rating	JIS 10K									
End Connection	Wafer									
Body Liner	Nitrile / EPDM / Viton / Silicon / Hypalon									
Body Material	GC200, SSC13									
Disc Material	SSC13									
Bonnet Type	Plain									
Packing	PTFE									
Seat Type	Soft									
Valve Characteristic	On-Off									
Handle	Metal									

Cv 값

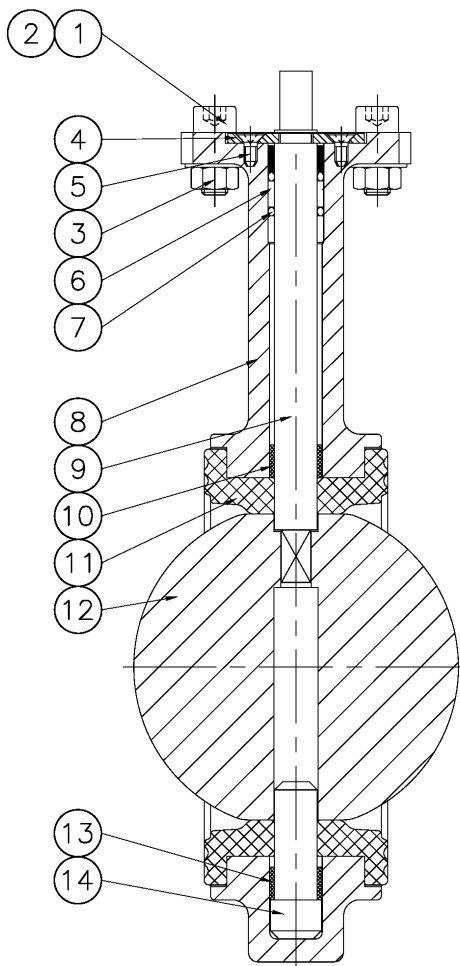
Valve Size		JIS Class	
NPS	DN	10K	
		60°	90°
2	50	59	127
2.5	65	117	251
3	80	177	381
4	100	222	724
5	125	357	1147
6	150	539	1454
8	200	901	2763
10	250	1425	4525
12	300	2136	6731

Valve Torque & Actuator Selection

Size(mm) Class	50A	65A	80A	100A	125A	150A	200A	250A	300A
JIS 10K	17	22	32	45	65	110	210	319	468
SR Actuator	RP08S	RP08S	RP08S	RP08S	RP12S	RP12S	RP14S	RP16S	RP16S
DA Actuator	RP06D	RP06D	RP08D	RP08D	RP10D	RP10D	RP12D	RP14D	RP16D
Electric Motor	KE004	KE004	KE006	KE006	KE008	KE016	KE028	KE040	KE080

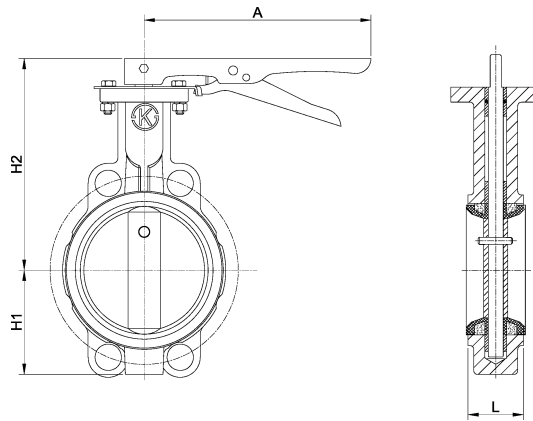
* Based on Actuator Supply Air 5 barg

PART LIST



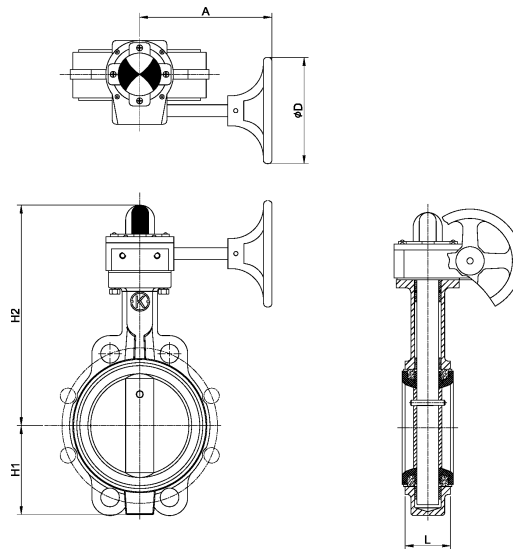
No.	Name
1	Bolt
2	Washer
3	Nut
4	Split ring
5	Bolt
6	Bearing
7	O-ring
8	Body
9	Stem
10	Bearing
11	Seat
12	Disc
13	Bearing
14	Stem

Lined Butterfly Valve Dimensions



JIS 10K (BODY Mat. : GC200)

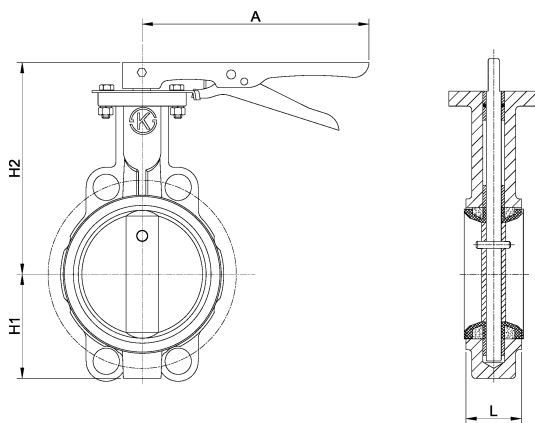
SIZE		L	H1	H2	A
mm	Inch				
50	2	43	67	164	245
65	2-1/2	46	75	174	245
80	3	46	83	180	245
100	4	52	99	201	245
125	5	56	116	214	280
150	6	56	132	228	280



JIS 10K (BODY Mat. : GC200)

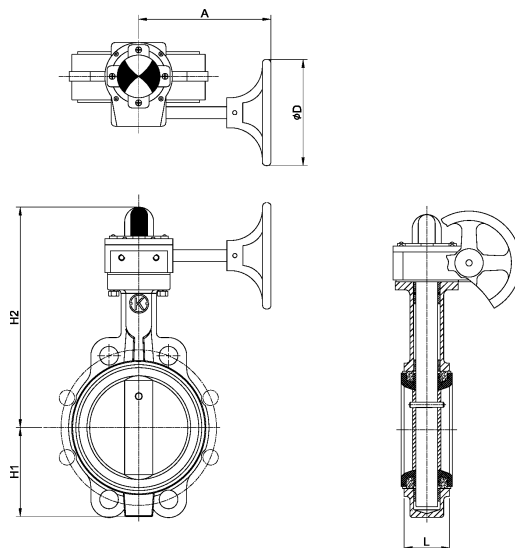
SIZE		L	H1	H2	D	A
mm	Inch					
50	2	43	67	229	138	160
65	2-1/2	46	77	239	138	160
80	3	46	86	245	138	160
100	4	52	100	266	138	160
125	5	56	117	279	138	160
150	6	56	133	293	138	160
200	8	60	166	366	270	200
250	10	68	199	395	270	200
300	12	78	218	448	270	200

Lined Butterfly Valve Dimensions



JIS 10K (BODY Mat. : SSC13)

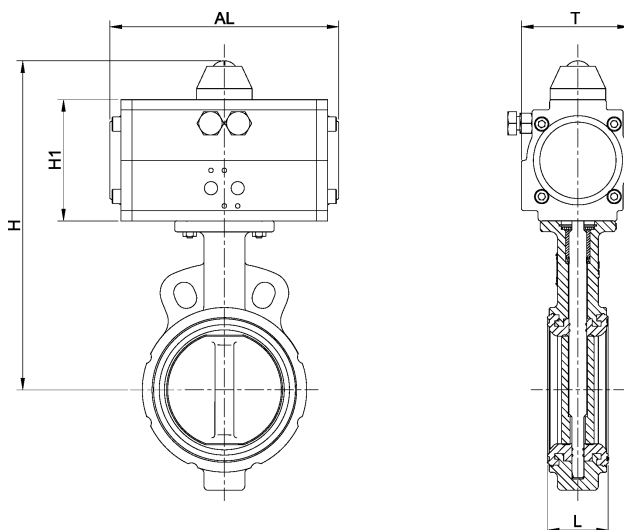
SIZE		L	H1	H2	A
mm	Inch				
50	2	43	63	154	245
65	2-1/2	46	72	168	245
80	3	46	78	177	245
100	4	52	93	193	245
125	5	56	107	214	280
150	6	56	123	229	280



JIS 10K (BODY Mat. : SSC13)

SIZE		L	H1	H2	D	A
mm	Inch					
50	2	43	63	219	138	160
65	2-1/2	46	72	233	138	160
80	3	46	78	242	138	160
100	4	52	93	258	138	160
125	5	56	107	279	138	160
150	6	56	123	294	138	160
200	8	60	155	343	270	200
250	10	68	190	390	270	200
300	12	78	215	427	270	200

Dimension Table (Lined Butterfly Valve, Actuator Assembly)



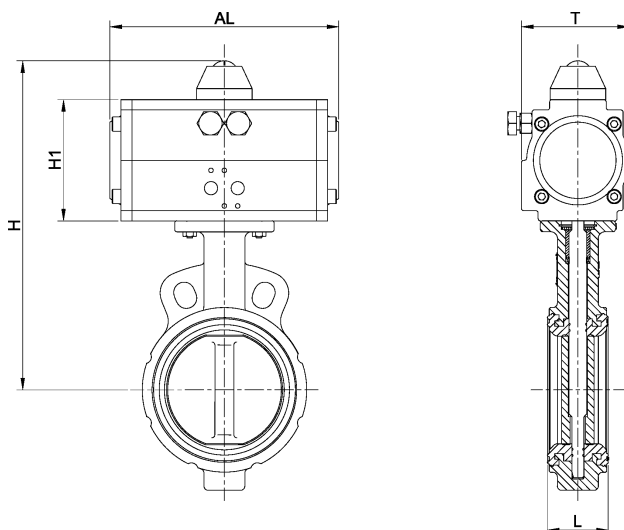
JIS 10K (Spring Return, BODY Mat. : GC200)

SIZE		SR Act.	L	H	H1	AL	T
mm	Inch						
50	2	RP08S	43	261	110	212	103
65	2-1/2	RP08S	46	271	110	212	103
80	3	RP08S	46	277	110	212	103
100	4	RP10S	52	324	135	270	116
125	5	RP12S	56	367	157	300	135
150	6	RP12S	56	381	157	300	135
200	8	RP14S	60	453	174	388	143
250	10	RP16S	68	512	199	456	174
300	12	RP16S	78	562	199	456	174

JIS 10K (Double Acting, BODY Mat. : GC200)

SIZE		SR Act.	L	H	H1	AL	T
mm	Inch						
50	2	RP06D	43	242	91	170	81
65	2-1/2	RP06D	46	252	91	170	81
80	3	RP08D	46	277	110	212	103
100	4	RP08D	52	298	110	212	103
125	5	RP10D	56	337	135	270	116
150	6	RP10D	56	351	135	270	116
200	8	RP12D	60	438	157	300	135
250	10	RP14D	68	482	174	388	143
300	12	RP16D	78	562	199	456	174

Dimension Table (Lined Butterfly Valve, Actuator Assembly)

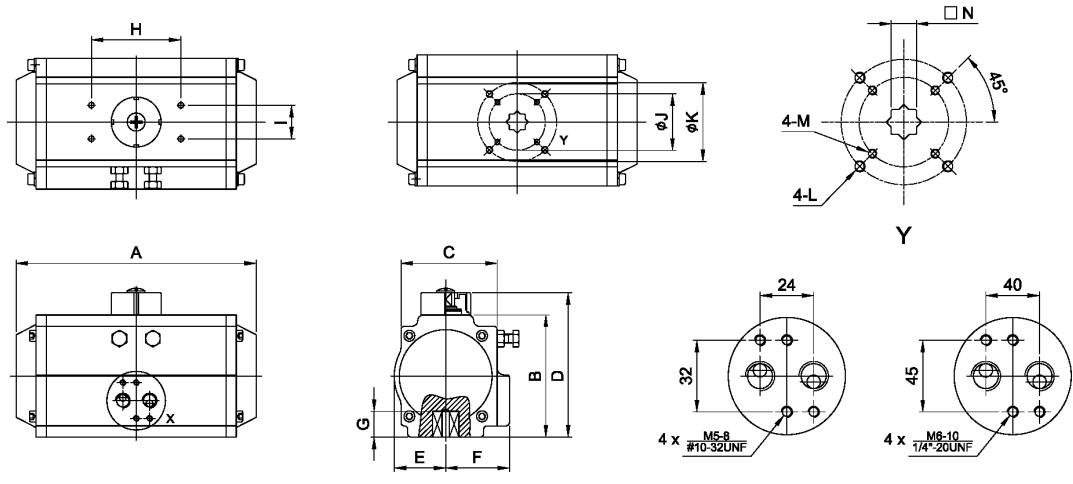


JIS 10K (Spring Return, BODY Mat. : SSC13)

SIZE		SR Act.	L	H	H1	AL	T
mm	Inch						
50	2	RP08S	43	251	110	212	103
65	2-1/2	RP08S	46	265	110	212	103
80	3	RP08S	46	274	110	212	103
100	4	RP10S	52	316	135	270	116
125	5	RP12S	56	367	157	300	135
150	6	RP12S	56	382	157	300	135
200	8	RP14S	60	430	174	388	143
250	10	RP16S	68	507	199	456	174
300	12	RP16S	78	541	199	456	174

JIS 10K (Double Acting, BODY Mat. : SSC13)

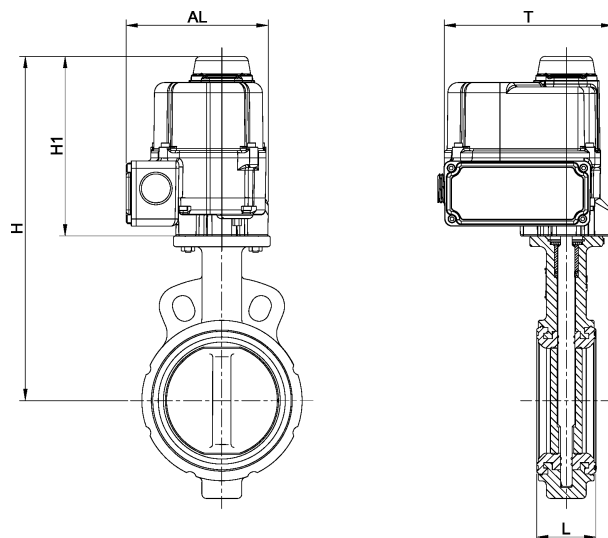
SIZE		SR Act.	L	H	H1	AL	T
mm	Inch						
50	2	RP06D	43	232	91	170	81
65	2-1/2	RP06D	46	246	91	170	81
80	3	RP08D	46	274	110	212	103
100	4	RP08D	52	290	110	212	103
125	5	RP10D	56	337	135	270	116
150	6	RP10D	56	352	135	270	116
200	8	RP12D	60	415	157	300	135
250	10	RP14D	68	477	174	388	143
300	12	RP16D	78	541	199	456	174



X - 1/4" NAMUR X- 1/2" NAMUR

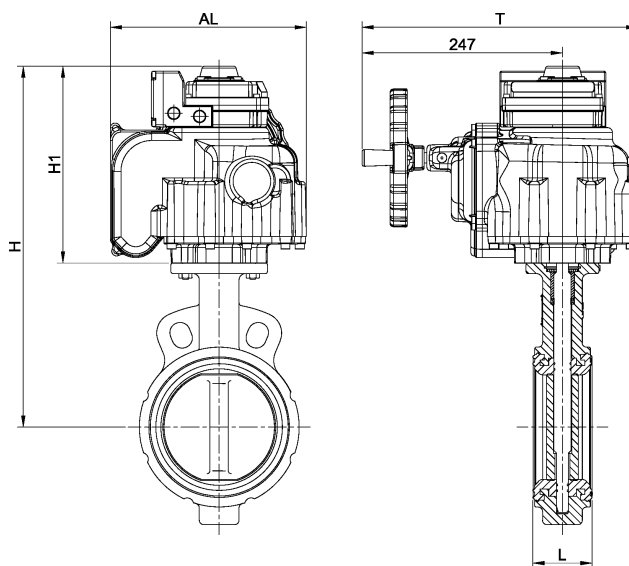
Model	A	B	C	D	E	F	G	H	I	N	J	K	L	M	Air Connection
RP05 S/D	147	72.8	60.5	92	26	41.5	14	80	30	11	F05	F03	M6 x 10	M5 x 7.5	1/4"
RP06 S/D	170	90.5	70	110	33.5	47	17	80	30	14	F07	F05	M8 x 13	M6 x 7.5	1/4"
RP08 S/D	212	109	86	129	40	57	17	80	30	14	F07	F05	M8 x 13	M6 x 10	1/4"
RP10 S/D	270	135	104.8	155	52	64	26	80	30	17	F10	F07	M10 x 16	M8 x 13	1/4"
RP12 S/D	302	157	120	185	60	74.5	25	80	30	22	F10	F07	M10 x 16	M8 x 13	1/4"
RP14 S/D	398	174	125	200	65	77	30	130	30	27	F12	F10	M12 x 20	M10 x 16	1/4"
RP16 S/D	460	201	143	230	74	87	30	130	30	27	F12	F10	M12 x 20	M10 x 16	1/4"
RP19 S/D	534	232	172.8	259	86	103	40	130	30	36	F14	-	M16 x 20	-	1/4"
RP21 S/D	536	265	194	295	97	113	43	130	30	36	F14	-	M16 x 20	-	1/4"
RP24 S/D	620	290	223	320	115	130	50	130	30	46	F16	-	M20 x 25	-	1/4"

Dimension Table (Lined Butterfly Valve, Electric Motor Assembly)



JIS 10K (Electric Motor, BODY Mat. : GC200)

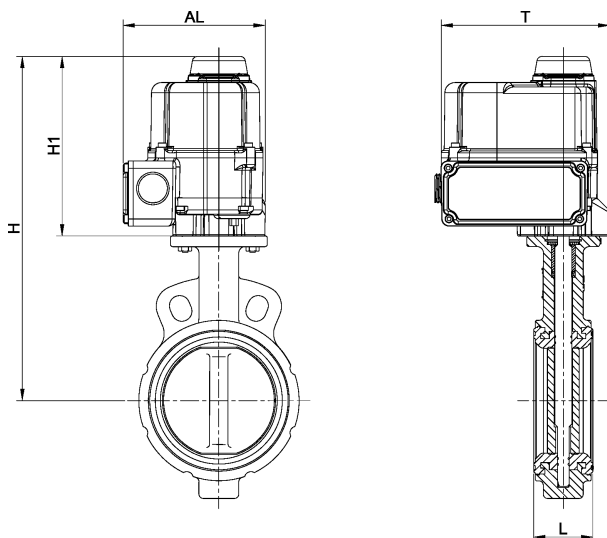
SIZE		Elect. Motor	L	H	H1	AL	T
mm	Inch						
50	2	KE004	43	256	124	98	117
65	2-1/2	KE004	46	266	124	98	117
80	3	KE006	46	283	135	111	122
100	4	KE006	52	304	135	111	122
125	5	KE008	56	338	156	122	126
150	6	KE016	56	386	190	171	157
200	8	KE028	60	462	209	209	182
250	10	KE040	68	491	209	209	182



JIS 10K (Electric Motor, BODY Mat. : GC200)

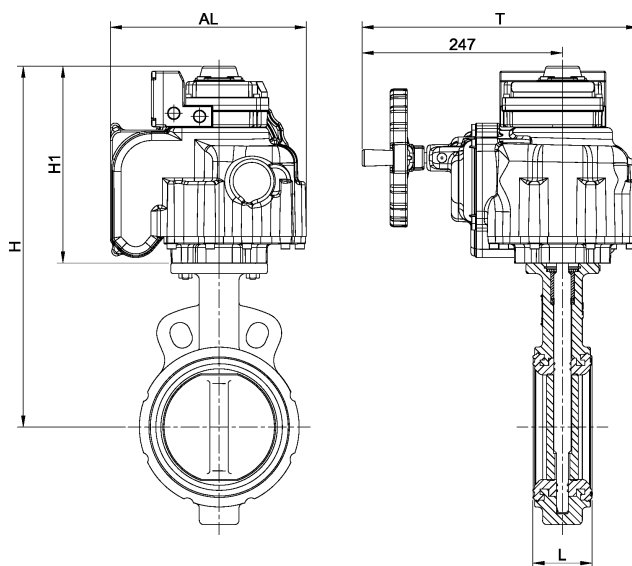
SIZE		Elect. Motor	L	H	H1	T
mm	Inch					
300	12	KE080	78	614	282	395

Dimension Table (Lined Butterfly Valve, Electric Motor Assembly)



JIS 10K (Electric Motor, BODY Mat. : SSC13)

SIZE		Elect. Motor	L	H	H1	AL	T
mm	Inch						
50	2	KE004	43	246	124	98	117
65	2-1/2	KE004	46	260	124	98	117
80	3	KE006	46	280	135	111	122
100	4	KE006	52	296	135	111	122
125	5	KE008	56	338	156	122	126
150	6	KE016	56	387	190	171	157
200	8	KE028	60	439	209	209	182
250	10	KE040	68	486	209	209	182



JIS 10K (Electric Motor, BODY Mat. : SSC13)

SIZE		Elect. Motor	L	H	H1	T
mm	Inch					
300	12	KE080	78	593	282	395

Warranty / Remedy

Doctor Valve Inc. warrants goods of its manufacture as being free of defective materials and faulty workmanship for 12 months from the date of shipment, unless otherwise specified. In this period, all of our products claimed by original defects may be returned to our factory after notice and authorization by us. If warranted goods are returned to Doctor Valve Inc. during the period of coverage, it will be repaired or replaced without charge for those items it finds defective. Such defects shall be exclusive of the effects of corrosion, erosion, normal wear or improper handling and storage. In case our engineers have field service, the user shall detach and install valves by his cost. Determination of the suitability of the Products for the use contemplated by the buyer or buyer's customer(s) is the sole responsibility of the buyer in connection therewith. The foregoing is buyer's sole remedy and is in lieu of all other warranties, expressed or implied, including those of merchantability and fitness for a particular purpose.

Specifications are subject to change without notices.



VALVES & CONTROLS

For More Information

Visit our website www.doctorvalve82.cafe24.com

DOCTOR VALVE INC.